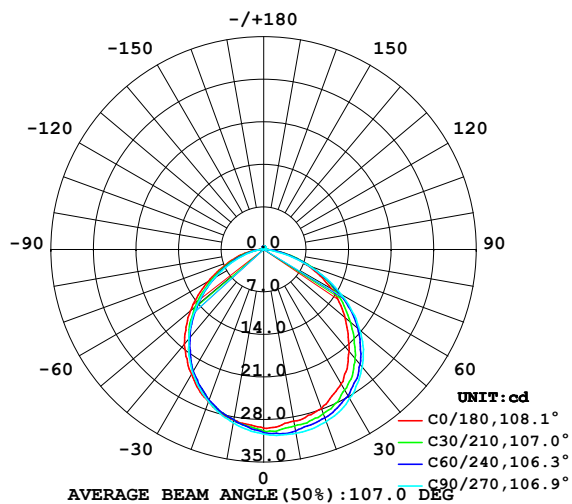


## LUMINAIRE PHOTOMETRIC TEST REPORT

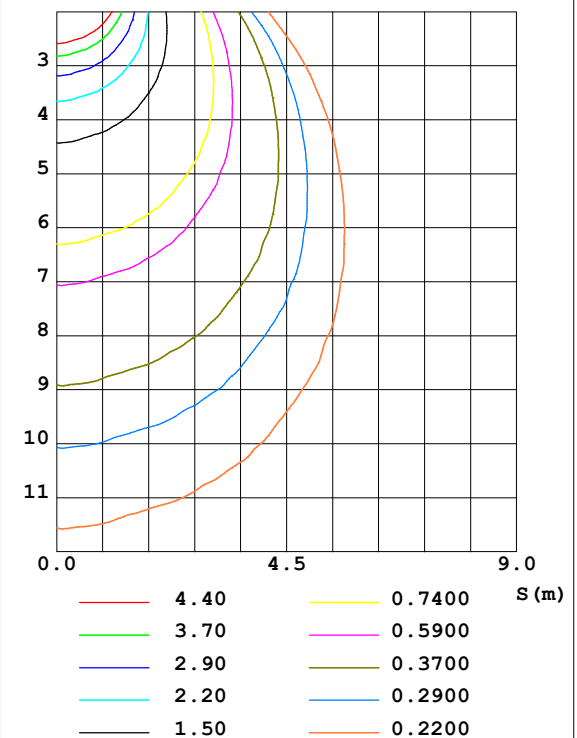
|  |               |                     |
|--|---------------|---------------------|
| Test:U:24.00V I:0.1648A P:3.955W PF:1.000 Lamp Flux:83.3597x1 lm |               |                     |
| NAME: SP01-24V-5050-60-RGBW-3000K-80-R                           | TYPE: 硅胶      | WEIGHT:             |
| DIM.: 15mm*7mm   | SPEC.:        | SERIAL No.:20221220 |
| MFR.: OLYMPIA  | SUR.:1*0.0015 | PROTECTION ANGLE:   |

| DATA OF LAMP      |         | PHOTOMETRIC DATA Eff: 21.08 lm/W |        |                     |           |
|-------------------|---------|----------------------------------|--------|---------------------|-----------|
| MODEL             | 5050    | I <sub>max</sub> (cd)            | 30.70  | S/MH (C0/180)       | 1.28      |
| NOMINAL POWER (W) | 17      | LOR (%)                          | 100.0  | S/MH (C90/270)      | 1.37      |
| RATED VOLTAGE (V) | 24      | TOTAL FLUX (lm)                  | 83.360 | η UP, DN (C0-180)   | 1.3, 53.6 |
| NOMINAL FLUX (lm) | 83.3597 | CIE CLASS                        | DIRECT | η UP, DN (C180-360) | 1.0, 44.1 |
| LAMPS INSIDE      | 1       | η up (%)                         | 2.3    | CIBSE SHR NOM       | 1.25      |
| TEST VOLTAGE (V)  | 24.0    | η down (%)                       | 97.7   | CIBSE SHR MAX       | 1.35      |

LUMINOUS INTENSITY DISTRIBUTION DIAGRAM



C0 PLANE ISOLUX DIAGRAM (UNIT:lx)



C Range: 0 - 360DEG  
C Interval: 30.0DEG  
Test Speed: HIGH  
Temperature:25.3DEG  
Operators:WFW  
Test Date:2022-12-14

γ Range: 0 - 180DEG  
γ Interval: 1.0DEG  
Test System:EVERFINE GO-2000B\_V1 SYSTEM V2.0.269  
Humidity:65.0%  
Test Distance:10.800m [K=1.0000]  
Remarks:

### ZONAL FLUX DIAGRAM AND LUMINANCE LIMITATION CURVES

#### ZONAL FLUX DIAGRAM:

| $\gamma$ | C0                    | C45    | C90    | C135   | C180   | C225   | C270   | C315   | $\gamma$ | $\Phi$ zone | $\Phi$ total | %lum, lamp |
|----------|-----------------------|--------|--------|--------|--------|--------|--------|--------|----------|-------------|--------------|------------|
| 10       | 28.67                 | 29.89  | 30.70  | 30.38  | 28.53  | 28.46  | 28.95  | 29.20  | 0- 10    | 2.836       | 2.836        | 3.4,3.4    |
| 20       | 27.87                 | 29.12  | 30.13  | 29.31  | 26.66  | 26.36  | 26.61  | 27.27  | 10- 20   | 8.130       | 10.97        | 13.2,13.2  |
| 30       | 25.52                 | 27.26  | 28.31  | 27.09  | 23.73  | 23.18  | 23.43  | 24.46  | 20- 30   | 12.36       | 23.32        | 28,28      |
| 40       | 21.92                 | 24.03  | 25.25  | 23.47  | 20.38  | 19.06  | 19.18  | 20.72  | 30- 40   | 14.82       | 38.15        | 45.8,45.8  |
| 50       | 17.45                 | 19.44  | 20.64  | 18.88  | 15.74  | 14.44  | 14.36  | 15.84  | 40- 50   | 15.06       | 53.21        | 63.8,63.8  |
| 60       | 12.87                 | 14.02  | 14.66  | 13.36  | 10.57  | 9.588  | 9.250  | 10.91  | 50- 60   | 13.02       | 66.23        | 79.4,79.4  |
| 70       | 7.659                 | 8.132  | 8.028  | 7.699  | 6.000  | 5.253  | 4.698  | 6.205  | 60- 70   | 9.194       | 75.42        | 90.5,90.5  |
| 80       | 3.059                 | 3.055  | 2.131  | 2.982  | 2.538  | 2.032  | 1.622  | 2.337  | 70- 80   | 4.773       | 80.19        | 96.2,96.2  |
| 90       | 0.3473                | 0.2599 | 0.2632 | 0.2464 | 0.1107 | 0.1526 | 0.1805 | 0.1839 | 80- 90   | 1.234       | 81.43        | 97.7,97.7  |
| 100      | 0.2424                | 0.2494 | 0.3117 | 0.2563 | 0.1387 | 0.1524 | 0.1662 | 0.1559 | 90-100   | 0.2190      | 81.65        | 97.9,97.9  |
| 110      | 0.2561                | 0.2840 | 0.3324 | 0.2978 | 0.2008 | 0.2147 | 0.1870 | 0.2112 | 100-110  | 0.2387      | 81.89        | 98.2,98.2  |
| 120      | 0.2839                | 0.3152 | 0.3464 | 0.3324 | 0.2494 | 0.2562 | 0.2559 | 0.2390 | 110-120  | 0.2641      | 82.15        | 98.5,98.5  |
| 130      | 0.3185                | 0.3497 | 0.4017 | 0.3740 | 0.3186 | 0.3186 | 0.2840 | 0.2839 | 120-130  | 0.2774      | 82.43        | 98.9,98.9  |
| 140      | 0.4017                | 0.4086 | 0.4363 | 0.4190 | 0.3742 | 0.3671 | 0.3461 | 0.3428 | 130-140  | 0.2757      | 82.70        | 99.2,99.2  |
| 150      | 0.4086                | 0.4364 | 0.4710 | 0.4467 | 0.4296 | 0.4260 | 0.3948 | 0.4259 | 140-150  | 0.2589      | 82.96        | 99.5,99.5  |
| 160      | 0.4363                | 0.4641 | 0.5056 | 0.4779 | 0.4849 | 0.4779 | 0.4363 | 0.4536 | 150-160  | 0.2082      | 83.17        | 99.8,99.8  |
| 170      | 0.5194                | 0.5125 | 0.5194 | 0.5090 | 0.5194 | 0.5229 | 0.5125 | 0.5056 | 160-170  | 0.1398      | 83.31        | 99.9,99.9  |
| 180      | 0.5194                | 0.5160 | 0.5194 | 0.5125 | 0.5194 | 0.5264 | 0.5125 | 0.5194 | 170-180  | 0.0493      | 83.36        | 100,100    |
| DEG      | LUMINOUS INTENSITY:cd |        |        |        |        |        |        |        |          | UNIT:lm     |              |            |



| LUMINANCE cd/(m2) |        |         |
|-------------------|--------|---------|
| G (DEG)           | C0/180 | C90/270 |
| 85                | 147    | 101     |
| 80                | 176    | 123     |
| 75                | 205    | 184     |
| 70                | 224    | 235     |
| 65                | 242    | 270     |
| 60                | 257    | 293     |
| 55                | 265    | 310     |
| 50                | 271    | 321     |
| 45                | 278    | 328     |

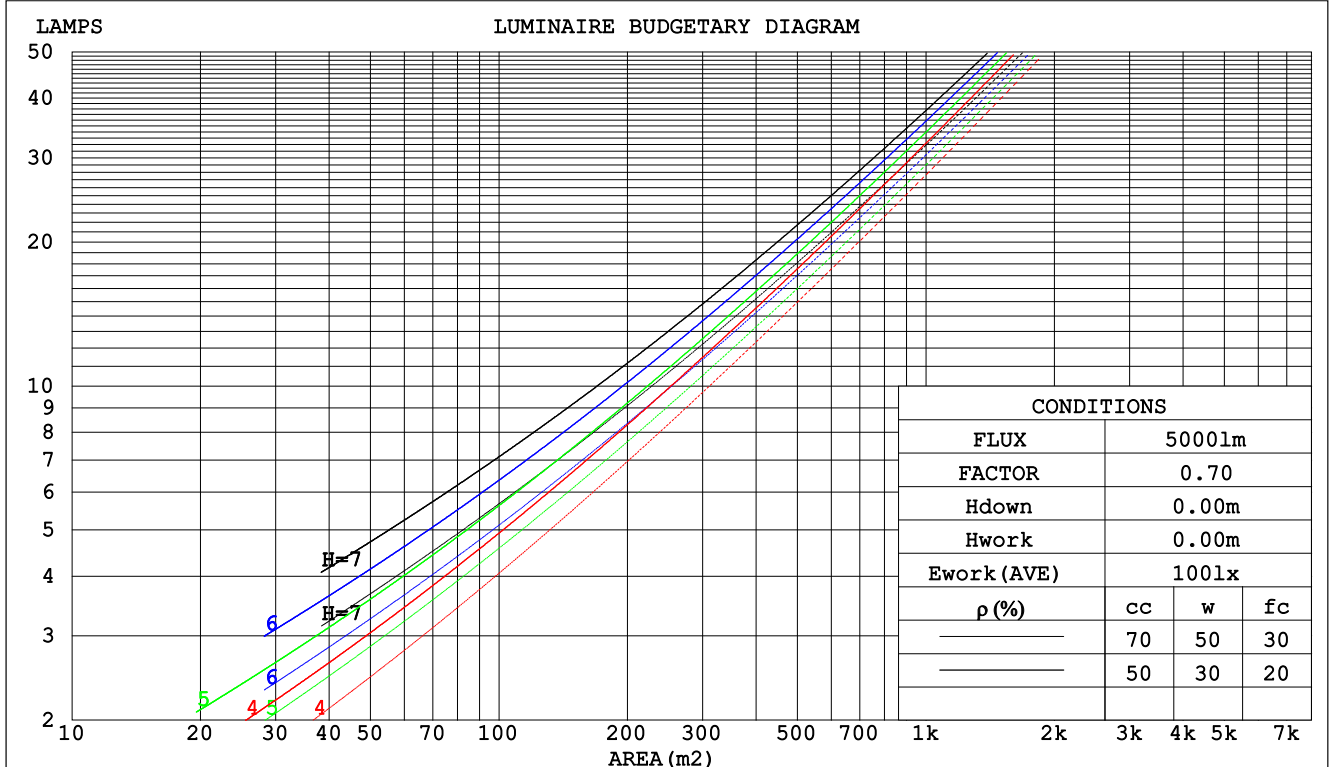
C Range: 0 - 360DEG  
C Interval: 30.0DEG  
Test Speed: HIGH  
Temperature:25.3DEG  
Operators:WFW  
Test Date:2022-12-14

$\gamma$  Range: 0 - 180DEG  
 $\gamma$  Interval: 1.0DEG  
Test System:EVERFINE GO-2000B\_V1 SYSTEM V2.0.269  
Humidity:65.0%  
Test Distance:10.800m [K=1.0000]  
Remarks:

## CU AND LUMINAIRE BUDGETARY ESTIMATE DIAGRAM

|  |               |                     |
|--|---------------|---------------------|
| Test:U:24.00V I:0.1648A P:3.955W PF:1.000 Lamp Flux:83.3597x1 lm |               |                     |
| NAME: SP01-24V-5050-60-RGBW-3000K-80-R                           | TYPE: 硅胶      | WEIGHT:             |
| DIM.: 15mm*7mm   | SPEC.:        | SERIAL No.:20221220 |
| MFR.: OLYMPIA  | SUR.:1*0.0015 | PROTECTION ANGLE:   |

| $\rho_{cc}$ | 80%                   |      |      | 70%  |      |      | 50%                             |      |      | 30%  |      |      | 10% |     |     | 0   |
|-------------|-----------------------|------|------|------|------|------|---------------------------------|------|------|------|------|------|-----|-----|-----|-----|
| $\rho_w$    | 50%                   | 30%  | 10%  | 50%  | 30%  | 10%  | 50%                             | 30%  | 10%  | 50%  | 30%  | 10%  | 50% | 30% | 10% | 0   |
| $\rho_{fc}$ | 20%                   |      |      | 20%  |      |      | 20%                             |      |      | 20%  |      |      | 20% |     |     | 0   |
| RCR         | RCR:Room Cavity Ratio |      |      |      |      |      | Coefficients of Utilization(CU) |      |      |      |      |      |     |     |     |     |
| 0.0         | 1.18                  | 1.18 | 1.18 | 1.15 | 1.15 | 1.15 | 1.10                            | 1.10 | 1.10 | 1.05 | 1.05 | 1.05 | .00 | .00 | .00 | .98 |
| 1.0         | 1.04                  | .00  | .96  | 1.02 | .98  | .94  | .97                             | .94  | .91  | .93  | .90  | .88  | .89 | .87 | .85 | .83 |
| 2.0         | .91                   | .84  | .79  | .89  | .83  | .78  | .85                             | .80  | .76  | .81  | .77  | .74  | .78 | .75 | .72 | .69 |
| 3.0         | .80                   | .72  | .66  | .78  | .71  | .65  | .75                             | .69  | .64  | .72  | .67  | .62  | .69 | .65 | .61 | .59 |
| 4.0         | .71                   | .63  | .56  | .70  | .62  | .55  | .67                             | .60  | .54  | .64  | .58  | .53  | .62 | .57 | .53 | .50 |
| 5.0         | .64                   | .55  | .48  | .62  | .54  | .48  | .60                             | .53  | .47  | .58  | .51  | .46  | .56 | .50 | .46 | .44 |
| 6.0         | .57                   | .49  | .42  | .56  | .48  | .42  | .54                             | .47  | .41  | .52  | .46  | .41  | .51 | .45 | .40 | .38 |
| 7.0         | .52                   | .43  | .37  | .51  | .43  | .37  | .49                             | .42  | .37  | .48  | .41  | .36  | .46 | .40 | .36 | .34 |
| 8.0         | .47                   | .39  | .33  | .47  | .39  | .33  | .45                             | .38  | .33  | .44  | .37  | .32  | .42 | .37 | .32 | .30 |
| 9.0         | .44                   | .35  | .30  | .43  | .35  | .30  | .42                             | .34  | .30  | .40  | .34  | .29  | .39 | .33 | .29 | .27 |
| 10.0        | .40                   | .32  | .27  | .40  | .32  | .27  | .38                             | .32  | .27  | .37  | .31  | .27  | .36 | .31 | .26 | .25 |



C Range: 0 - 360DEG  
C Interval: 30.0DEG  
Test Speed: HIGH  
Temperature:25.3DEG  
Operators:WFW  
Test Date:2022-12-14

$\gamma$  Range: 0 - 180DEG  
 $\gamma$  Interval: 1.0DEG  
Test System:EVERFINE GO-2000B\_V1 SYSTEM V2.0.269  
Humidity:65.0%  
Test Distance:10.800m [K=1.0000]  
Remarks:

### WEC AND CCEC

|  |  |  |               |  |                     |
|--|--|--|---------------|--|---------------------|
| Test:U:24.00V I:0.1648A P:3.955W PF:1.000 Lamp Flux:83.3597x1 lm |  |  |               |  |                     |
| NAME: SP01-24V-5050-60-RGBW-3000K-80-R                           |  |  | TYPE: 硅胶      |  | WEIGHT:             |
| DIM.: 15mm*7mm   |  |  | SPEC.:        |  | SERIAL No.:20221220 |
| MFR.: OLYMPIA  |  |  | SUR.:1*0.0015 |  | PROTECTION ANGLE:   |

| pcc  | 80%                   |      |      | 70%  |      |      | 50%                             |      |      | 30%  |      |      | 10%  |      |      | 0 |  |
|------|-----------------------|------|------|------|------|------|---------------------------------|------|------|------|------|------|------|------|------|---|--|
| pw   | 50%                   | 30%  | 10%  | 50%  | 30%  | 10%  | 50%                             | 30%  | 10%  | 50%  | 30%  | 10%  | 50%  | 30%  | 10%  | 0 |  |
| pfc  | 20%                   |      |      | 20%  |      |      | 20%                             |      |      | 20%  |      |      | 20%  |      |      | 0 |  |
| RCR  | RCR:Room Cavity Ratio |      |      |      |      |      | Wall Exitance Coefficients(WEC) |      |      |      |      |      |      |      |      |   |  |
| 0.0  |                       |      |      |      |      |      |                                 |      |      |      |      |      |      |      |      |   |  |
| 1.0  | .296                  | .168 | .053 | .288 | .164 | .052 | .274                            | .157 | .050 | .260 | .150 | .048 | .248 | .144 | .046 |   |  |
| 2.0  | .281                  | .154 | .047 | .274 | .151 | .046 | .261                            | .145 | .045 | .249 | .140 | .044 | .238 | .135 | .043 |   |  |
| 3.0  | .261                  | .139 | .042 | .255 | .137 | .041 | .244                            | .132 | .040 | .233 | .128 | .039 | .224 | .124 | .038 |   |  |
| 4.0  | .242                  | .126 | .037 | .237 | .124 | .037 | .227                            | .120 | .036 | .217 | .117 | .035 | .209 | .113 | .035 |   |  |
| 5.0  | .225                  | .115 | .033 | .220 | .113 | .033 | .211                            | .110 | .032 | .202 | .107 | .032 | .195 | .104 | .031 |   |  |
| 6.0  | .209                  | .105 | .030 | .205 | .103 | .030 | .197                            | .101 | .029 | .189 | .098 | .029 | .182 | .096 | .028 |   |  |
| 7.0  | .195                  | .096 | .027 | .191 | .095 | .027 | .184                            | .093 | .027 | .177 | .091 | .026 | .171 | .089 | .026 |   |  |
| 8.0  | .182                  | .089 | .025 | .179 | .088 | .025 | .172                            | .086 | .025 | .166 | .084 | .024 | .160 | .082 | .024 |   |  |
| 9.0  | .171                  | .083 | .023 | .168 | .082 | .023 | .162                            | .080 | .023 | .157 | .079 | .022 | .151 | .077 | .022 |   |  |
| 10.0 | .161                  | .077 | .021 | .158 | .077 | .021 | .153                            | .075 | .021 | .148 | .073 | .021 | .143 | .072 | .021 |   |  |

| pcc  | 80%                   |      |      | 70%  |      |      | 50%   |      |      | 30%  |      |      | 10%  |      |      | 0 |
|------|-----------------------|------|------|------|------|------|---|------|------|------|------|------|------|------|------|---|
| pw   | 50%                   | 30%  | 10%  | 50%  | 30%  | 10%  | 50%   | 30%  | 10%  | 50%  | 30%  | 10%  | 50%  | 30%  | 10%  | 0 |
| pfc  | 20%                   |      |      | 20%  |      |      | 20%   |      |      | 20%  |      |      | 20%  |      |      | 0 |
| RCR  | RCR:Room Cavity Ratio |      |      |      |      |      | Ceiling Cavity Exitance Coefficients (CCEC) |      |      |      |      |      |      |      |      |   |
| 0.0  | .208                  | .208 | .208 | .178 | .178 | .178 | .121  | .121 | .121 | .070 | .070 | .070 | .022 | .022 | .022 |   |
| 1.0  | .197                  | .174 | .153 | .169 | .149 | .132 | .115  | .103 | .091 | .066 | .059 | .053 | .021 | .019 | .017 |   |
| 2.0  | .189                  | .150 | .117 | .162 | .129 | .101 | .111  | .089 | .071 | .064 | .052 | .041 | .020 | .017 | .014 |   |
| 3.0  | .181                  | .132 | .094 | .155 | .114 | .081 | .106  | .079 | .057 | .061 | .046 | .034 | .020 | .015 | .011 |   |
| 4.0  | .173                  | .119 | .077 | .149 | .103 | .067 | .102  | .072 | .047 | .059 | .042 | .028 | .019 | .014 | .009 |   |
| 5.0  | .166                  | .109 | .066 | .142 | .094 | .058 | .098  | .066 | .041 | .057 | .039 | .024 | .018 | .013 | .008 |   |
| 6.0  | .159                  | .100 | .058 | .137 | .087 | .051 | .094  | .061 | .036 | .055 | .036 | .021 | .018 | .012 | .007 |   |
| 7.0  | .152                  | .093 | .052 | .131 | .081 | .045 | .090  | .057 | .032 | .053 | .033 | .019 | .017 | .011 | .006 |   |
| 8.0  | .146                  | .088 | .047 | .126 | .076 | .041 | .087  | .053 | .029 | .051 | .031 | .017 | .016 | .010 | .006 |   |
| 9.0  | .140                  | .083 | .044 | .121 | .072 | .038 | .084  | .050 | .027 | .049 | .030 | .016 | .016 | .010 | .005 |   |
| 10.0 | .134                  | .078 | .041 | .116 | .068 | .036 | .080  | .048 | .025 | .047 | .028 | .015 | .015 | .009 | .005 |   |

C Range: 0 - 360DEG  
C Interval: 30.0DEG  
Test Speed: HIGH  
Temperature:25.3DEG  
Operators:WFW  
Test Date:2022-12-14

γ Range: 0 - 180DEG  
γ Interval: 1.0DEG  
Test System:EVERFINE GO-2000B\_V1 SYSTEM V2.0.269  
Humidity:65.0%  
Test Distance:10.800m [K=1.0000]  
Remarks:

### Uncorrected UGR Table

|  |                  |      |      |      |      |                |      |                     |      |      |
|--|------------------|------|------|------|------|----------------|------|---------------------|------|------|
| Test:U:24.00V I:0.1648A P:3.955W PF:1.000 Lamp Flux:83.3597x1 lm |                  |      |      |      |      |                |      |                     |      |      |
| NAME: SP01-24V-5050-60-RGBW-3000K-80-R                           |                  |      |      |      |      | TYPE:硅胶        |      | WEIGHT:             |      |      |
| DIM.: 15mm*7mm   |                  |      |      |      |      | SPEC.:         |      | SERIAL No.:20221220 |      |      |
| MFR.: OLYMPIA  |                  |      |      |      |      | SUR.:1*0.0015  |      | PROTECTION ANGLE:   |      |      |
| ceiling/cavity   | 0.7              | 0.7  | 0.5  | 0.5  | 0.3  | 0.7            | 0.7  | 0.5                 | 0.5  | 0.3  |
| walls  | 0.5              | 0.3  | 0.5  | 0.3  | 0.3  | 0.5            | 0.3  | 0.5                 | 0.3  | 0.3  |
| working plane  | 0.2              | 0.2  | 0.2  | 0.2  | 0.2  | 0.2            | 0.2  | 0.2                 | 0.2  | 0.2  |
| Room dimensions  | Viewed crosswise |      |      |      |      | Viewed endwise |      |                     |      |      |
| x = 2H y = 2H  | 8.5              | 10.0 | 8.8  | 10.2 | 10.5 | 9.1            | 10.6 | 9.4                 | 10.8 | 11.1 |
| 3H   | 9.9              | 11.3 | 10.3 | 11.5 | 11.8 | 10.4           | 11.7 | 10.7                | 12.0 | 12.3 |
| 4H   | 10.5             | 11.7 | 10.8 | 12.0 | 12.3 | 10.8           | 12.1 | 11.1                | 12.3 | 12.6 |
| 6H   | 10.8             | 12.0 | 11.2 | 12.3 | 12.6 | 10.9           | 12.1 | 11.3                | 12.4 | 12.8 |
| 8H   | 10.9             | 12.1 | 11.3 | 12.4 | 12.7 | 11.0           | 12.1 | 11.3                | 12.4 | 12.8 |
| 12H  | 10.9             | 12.1 | 11.3 | 12.4 | 12.7 | 11.0           | 12.1 | 11.3                | 12.4 | 12.7 |
| 4H 2H  | 9.2              | 10.5 | 9.5  | 10.8 | 11.1 | 9.6            | 10.9 | 10.0                | 11.2 | 11.5 |
| 3H   | 10.8             | 11.9 | 11.1 | 12.2 | 12.5 | 11.1           | 12.2 | 11.5                | 12.5 | 12.9 |
| 4H   | 11.4             | 12.4 | 11.8 | 12.8 | 13.2 | 11.6           | 12.6 | 12.0                | 12.9 | 13.3 |
| 6H   | 11.9             | 12.7 | 12.3 | 13.1 | 13.6 | 11.8           | 12.7 | 12.3                | 13.1 | 13.5 |
| 8H   | 12.0             | 12.8 | 12.4 | 13.2 | 13.7 | 11.9           | 12.7 | 12.3                | 13.1 | 13.6 |
| 12H  | 12.1             | 12.8 | 12.5 | 13.3 | 13.7 | 11.9           | 12.7 | 12.4                | 13.1 | 13.5 |
| 8H 4H  | 11.6             | 12.5 | 12.1 | 12.9 | 13.3 | 11.8           | 12.6 | 12.2                | 13.0 | 13.4 |
| 6H   | 12.2             | 12.9 | 12.7 | 13.3 | 13.8 | 12.2           | 12.8 | 12.6                | 13.3 | 13.8 |
| 8H   | 12.4             | 13.0 | 12.9 | 13.5 | 14.0 | 12.3           | 12.9 | 12.8                | 13.3 | 13.8 |
| 12H  | 12.6             | 13.1 | 13.1 | 13.6 | 14.1 | 12.3           | 12.9 | 12.9                | 13.4 | 13.9 |
| 12H 4H   | 11.6             | 12.4 | 12.1 | 12.8 | 13.3 | 11.8           | 12.5 | 12.2                | 13.0 | 13.4 |
| 6H   | 12.2             | 12.9 | 12.7 | 13.3 | 13.8 | 12.2           | 12.8 | 12.7                | 13.3 | 13.8 |
| 8H   | 12.5             | 13.0 | 13.0 | 13.5 | 14.0 | 12.3           | 12.9 | 12.8                | 13.3 | 13.9 |
| Variations with the observer position at spacings:               |                  |      |      |      |      |                |      |                     |      |      |
| S = 1.0H   | + 0.2 / - 0.2    |      |      |      |      | + 0.2 / - 0.2  |      |                     |      |      |
| 1.5H   | + 0.2 / - 0.4    |      |      |      |      | + 0.2 / - 0.4  |      |                     |      |      |
| 2.0H   | + 0.2 / - 0.4    |      |      |      |      | + 0.3 / - 0.4  |      |                     |      |      |

CIE Pub.117 Corrected 83.36 lm Total Lamp Luminous Flux. (8log(F/F0) = -8.6)

C Range: 0 - 360DEG  
C Interval: 30.0DEG  
Test Speed: HIGH  
Temperature:25.3DEG  
Operators:WFW  
Test Date:2022-12-14

γ Range: 0 - 180DEG  
γ Interval: 1.0DEG  
Test System:EVERFINE GO-2000B\_V1 SYSTEM V2.0.269  
Humidity:65.0%  
Test Distance:10.800m [K=1.0000]  
Remarks:

### UTILIZATION FACTORS TABLE

|  |               |                     |
|--|---------------|---------------------|
| Test:U:24.00V I:0.1648A P:3.955W PF:1.000 Lamp Flux:83.3597x1 lm |               |                     |
| NAME: SP01-24V-5050-60-RGBW-3000K-80-R                           | TYPE: 硅胶      | WEIGHT:             |
| DIM.: 15mm*7mm   | SPEC.:        | SERIAL No.:20221220 |
| MFR.: OLYMPIA  | SUR.:1*0.0015 | PROTECTION ANGLE:   |

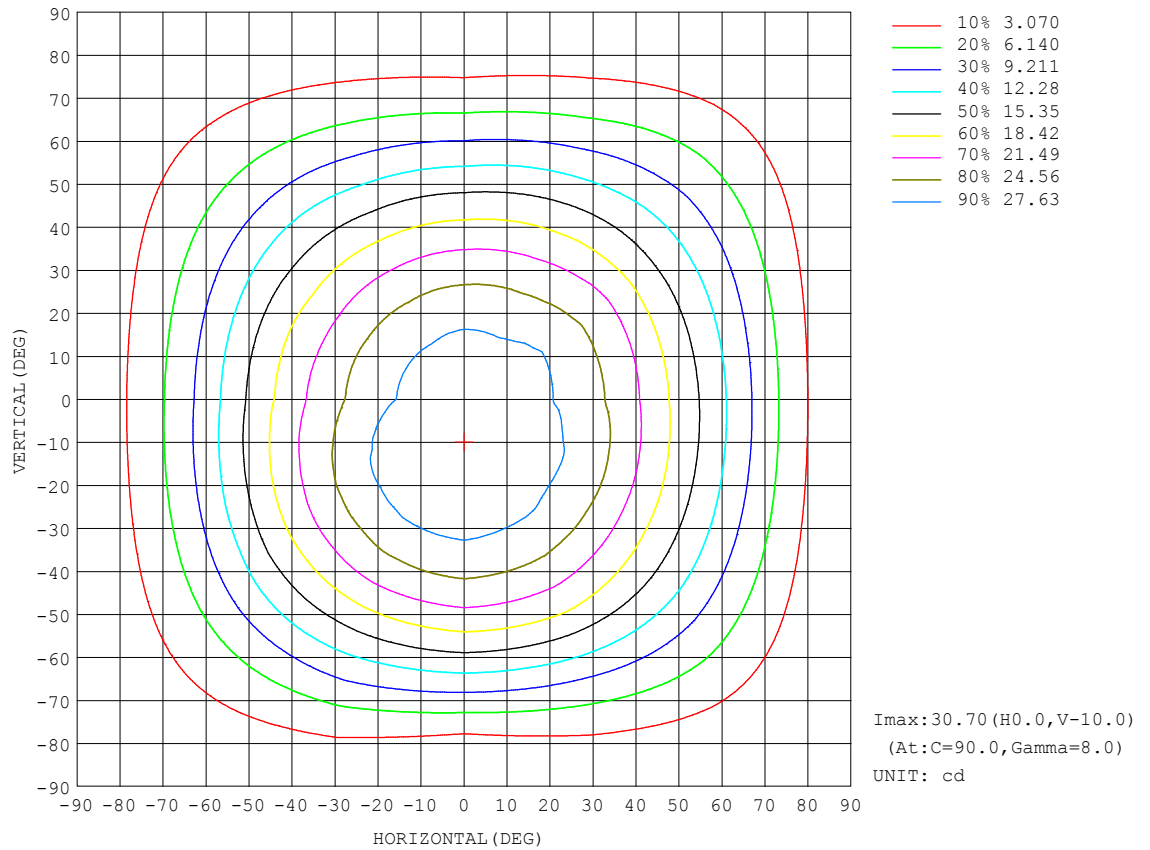
| REFLECTANCE                      |  |     |           |     |     |     |     |              |     |        |
|----------------------------------|--|-----|-----------|-----|-----|-----|-----|--------------|-----|--------|
| Ceiling                          | 0.8  | 0.8 | 0.8       | 0.7 | 0.7 | 0.7 | 0.5 | 0.5          | 0.5 | 0      |
| Walls                            | 0.7  | 0.5 | 0.3       | 0.7 | 0.5 | 0.3 | 0.7 | 0.5          | 0.3 | 0      |
| Working plane                    | 0.2  | 0.2 | 0.2       | 0.2 | 0.2 | 0.2 | 0.2 | 0.2          | 0.2 | 0      |
| ROOM INDEX                       | UTILIZATION FACTORS (PERCENT) $k(RI) \times RCR = 5$ |     |           |     |     |     |     |              |     |        |
| $k = 0.60$                       | 58   | 47  | 40        | 57  | 46  | 40  | 56  | 46           | 39  | 33     |
| 0.80                             | 68   | 57  | 50        | 67  | 56  | 49  | 65  | 55           | 49  | 42     |
| 1.00                             | 77   | 66  | 59        | 75  | 65  | 58  | 73  | 66           | 58  | 50     |
| 1.25                             | 84   | 73  | 66        | 82  | 73  | 66  | 79  | 71           | 65  | 58     |
| 1.50                             | 89   | 79  | 72        | 87  | 78  | 72  | 84  | 76           | 70  | 63     |
| 2.00                             | 95   | 87  | 81        | 93  | 86  | 80  | 90  | 83           | 78  | 70     |
| 2.50                             | 99   | 92  | 86        | 97  | 90  | 85  | 93  | 87           | 82  | 74     |
| 3.00                             | 102  | 96  | 90        | 100 | 94  | 89  | 96  | 91           | 87  | 78     |
| 4.00                             | 106  | 101 | 96        | 104 | 99  | 95  | 99  | 95           | 92  | 82     |
| 5.00                             | 108  | 104 | 100       | 106 | 102 | 98  | 101 | 98           | 95  | 85     |
| ROOM INDEX                       | UF(total)  |     |           |     |     |     |     |              |     | Direct |
| According to DIN EN 13032-2 2004 |  |     | Suspended |     |     |     |     | SHRNM = 1.25 |     |        |

C Range: 0 - 360DEG  
C Interval: 30.0DEG  
Test Speed: HIGH  
Temperature:25.3DEG  
Operators:WFW  
Test Date:2022-12-14

$\gamma$  Range: 0 - 180DEG  
 $\gamma$  Interval: 1.0DEG  
Test System:EVERFINE GO-2000B\_V1 SYSTEM V2.0.269  
Humidity:65.0%  
Test Distance:10.800m [K=1.0000]  
Remarks:

## ISOCANDELA DIAGRAM

|  |               |                     |
|--|---------------|---------------------|
| Test:U:24.00V I:0.1648A P:3.955W PF:1.000 Lamp Flux:83.3597x1 lm |               |                     |
| NAME: SP01-24V-5050-60-RGBW-3000K-80-R                           | TYPE: 硅胶      | WEIGHT:             |
| DIM.: 15mm*7mm   | SPEC.:        | SERIAL No.:20221220 |
| MFR.: OLYMPIA  | SUR.:1*0.0015 | PROTECTION ANGLE:   |

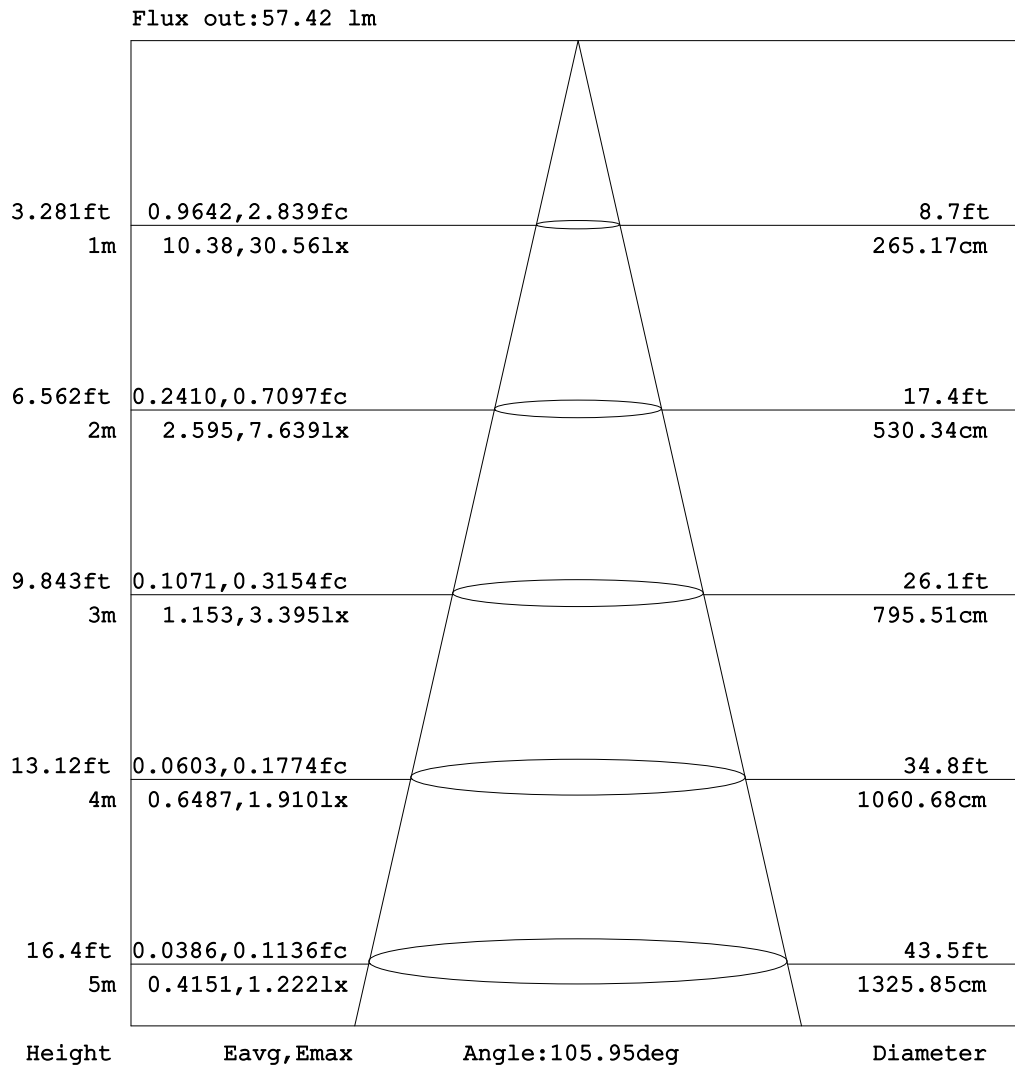


C Range: 0 - 360DEG  
C Interval: 30.0DEG  
Test Speed: HIGH  
Temperature:25.3DEG  
Operators:WFW  
Test Date:2022-12-14

$\gamma$  Range: 0 - 180DEG  
 $\gamma$  Interval: 1.0DEG  
Test System:EVERFINE GO-2000B\_V1 SYSTEM V2.0.269  
Humidity:65.0%  
Test Distance:10.800m [K=1.0000]  
Remarks:

### AAI Figure

|  |               |                     |
|--|---------------|---------------------|
| Test:U:24.00V I:0.1648A P:3.955W PF:1.000 Lamp Flux:83.3597x1 lm |               |                     |
| NAME: SP01-24V-5050-60-RGBW-3000K-80-R                           | TYPE: 硅胶      | WEIGHT:             |
| DIM.: 15mm*7mm   | SPEC.:        | SERIAL No.:20221220 |
| MFR.: OLYMPIA  | SUR.:1*0.0015 | PROTECTION ANGLE:   |



Note: The Curves indicate the illuminated area and the average illumination when the luminaire is at different distance.

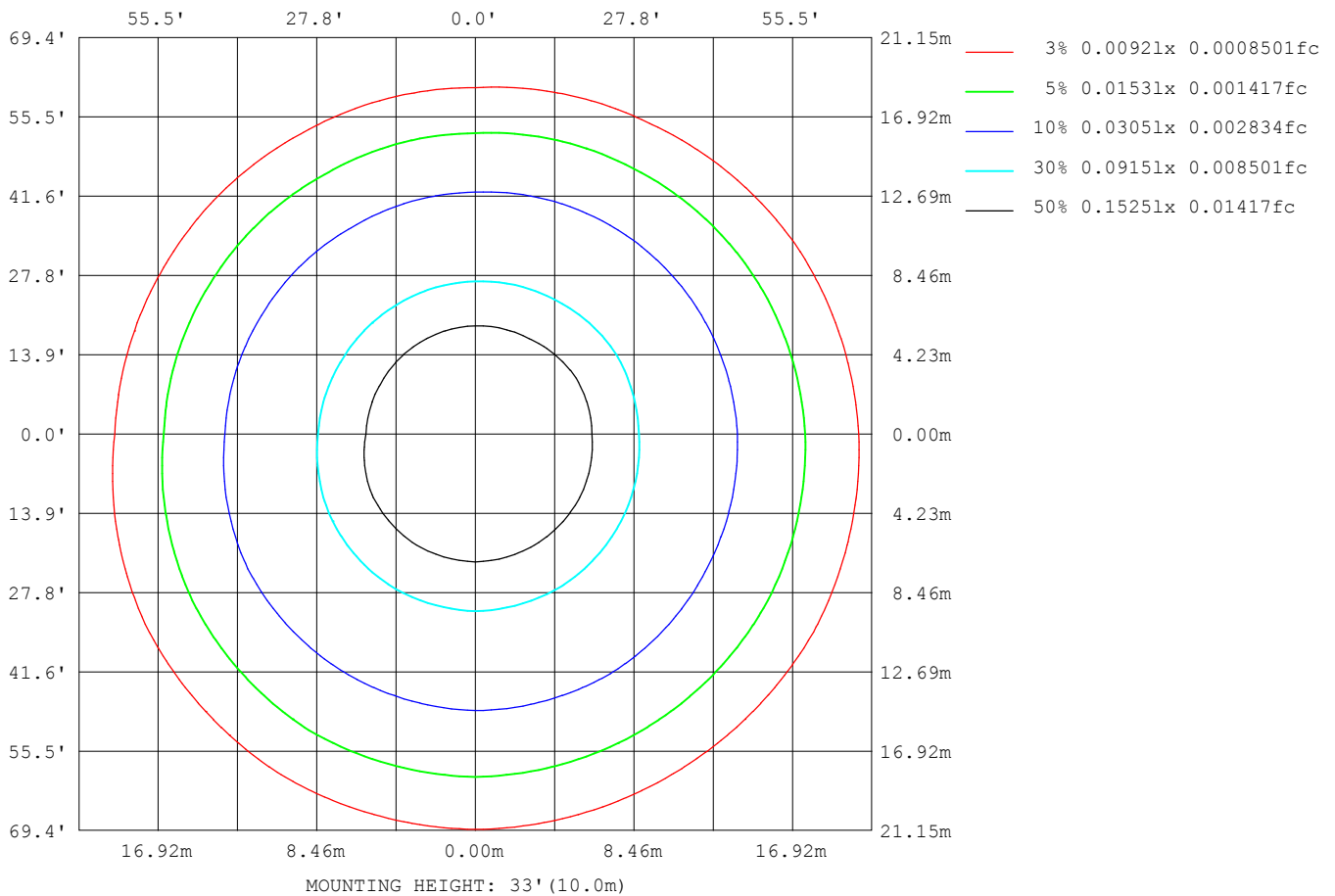
C Range: 0 - 360DEG  
C Interval: 30.0DEG  
Test Speed: HIGH  
Temperature: 25.3DEG  
Operators: WFW  
Test Date: 2022-12-14

γ Range: 0 - 180DEG  
γ Interval: 1.0DEG  
Test System: EVERFINE GO-2000B\_V1 SYSTEM V2.0.269  
Humidity: 65.0%  
Test Distance: 10.800m [K=1.0000]  
Remarks:



## ISOLUX DIAGRAM

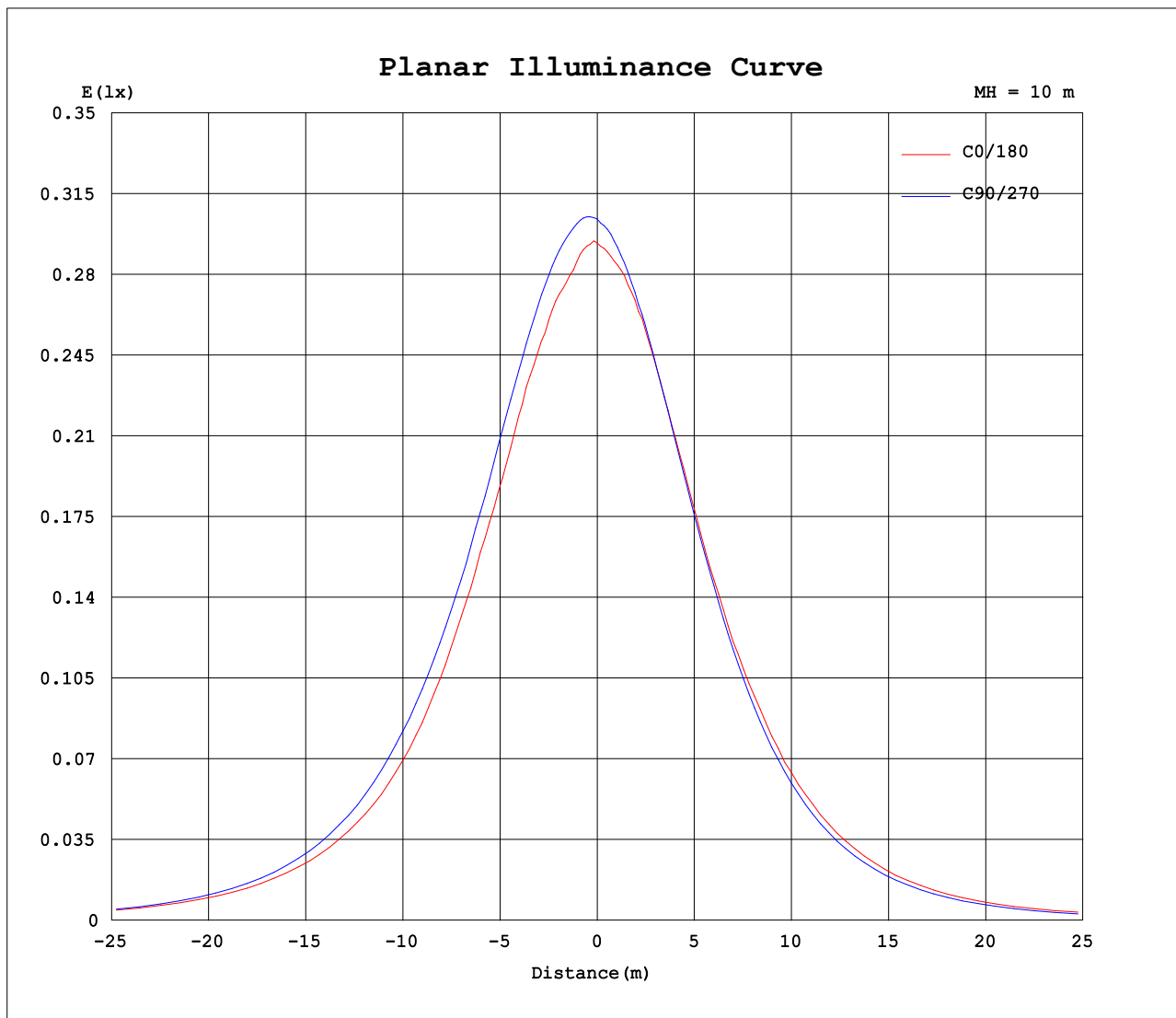
|  |               |                     |
|--|---------------|---------------------|
| Test:U:24.00V I:0.1648A P:3.955W PF:1.000 Lamp Flux:83.3597x1 lm |               |                     |
| NAME: SP01-24V-5050-60-RGBW-3000K-80-R                           | TYPE: 硅胶      | WEIGHT:             |
| DIM.: 15mm*7mm   | SPEC.:        | SERIAL No.:20221220 |
| MFR.: OLYMPIA  | SUR.:1*0.0015 | PROTECTION ANGLE:   |



C Range: 0 - 360DEG  
C Interval: 30.0DEG  
Test Speed: HIGH  
Temperature:25.3DEG  
Operators:WFW  
Test Date:2022-12-14

$\gamma$  Range: 0 - 180DEG  
 $\gamma$  Interval: 1.0DEG  
Test System:EVERFINE GO-2000B\_V1 SYSTEM V2.0.269  
Humidity:65.0%  
Test Distance:10.800m [K=1.0000]  
Remarks:

## Planar Illuminance Curve



C Range: 0 - 360DEG  
C Interval: 30.0DEG  
Test Speed: HIGH  
Temperature: 25.3DEG  
Operators: WFW  
Test Date: 2022-12-14

$\gamma$  Range: 0 - 180DEG  
 $\gamma$  Interval: 1.0DEG  
Test System: EVERFINE GO-2000B\_V1 SYSTEM V2.0.269  
Humidity: 65.0%  
Test Distance: 10.800m [K=1.0000]  
Remarks:

## LUMINOUS DISTRIBUTION INTENSITY DATA

|  |               |                     |
|--|---------------|---------------------|
| Test:U:24.00V I:0.1648A P:3.955W PF:1.000 Lamp Flux:83.3597x1 lm |               |                     |
| NAME: SP01-24V-5050-60-RGBW-3000K-80-R                           | TYPE: 硅胶      | WEIGHT:             |
| DIM.: 15mm*7mm   | SPEC.:        | SERIAL No.:20221220 |
| MFR.: OLYMPIA  | SUR.:1*0.0015 | PROTECTION ANGLE:   |

Table--1

UNIT: cd

| C (DEG)<br>γ (DEG) | 0    | 30   | 60   | 90   | 120  | 150  | 180  | 210  | 240  | 270  | 300  | 330  |  |  |  |  |  |  |
|--------------------|------|------|------|------|------|------|------|------|------|------|------|------|--|--|--|--|--|--|
| 0                  | 29.4 | 29.9 | 30.1 | 30.4 | 30.5 | 30.5 | 29.4 | 29.9 | 30.1 | 30.4 | 30.5 | 30.5 |  |  |  |  |  |  |
| 5                  | 29.2 | 29.8 | 30.5 | 30.7 | 30.5 | 30.4 | 28.9 | 29.2 | 29.4 | 29.8 | 29.9 | 30.2 |  |  |  |  |  |  |
| 10                 | 28.7 | 29.5 | 30.3 | 30.7 | 30.5 | 30.3 | 28.5 | 28.5 | 28.5 | 29.0 | 29.1 | 29.3 |  |  |  |  |  |  |
| 15                 | 28.3 | 29.2 | 29.9 | 30.6 | 30.4 | 29.6 | 27.8 | 27.7 | 27.6 | 27.9 | 28.0 | 28.8 |  |  |  |  |  |  |
| 20                 | 27.9 | 28.8 | 29.5 | 30.1 | 29.8 | 28.9 | 26.7 | 26.4 | 26.3 | 26.6 | 26.7 | 27.8 |  |  |  |  |  |  |
| 25                 | 26.6 | 28.0 | 28.8 | 29.5 | 28.9 | 27.7 | 25.4 | 24.9 | 24.8 | 25.1 | 25.5 | 26.7 |  |  |  |  |  |  |
| 30                 | 25.5 | 26.7 | 27.8 | 28.3 | 27.7 | 26.4 | 23.7 | 23.2 | 23.2 | 23.4 | 23.7 | 25.2 |  |  |  |  |  |  |
| 35                 | 24.0 | 25.4 | 26.4 | 26.9 | 26.2 | 24.6 | 22.0 | 21.3 | 21.0 | 21.4 | 22.0 | 23.5 |  |  |  |  |  |  |
| 40                 | 21.9 | 23.4 | 24.7 | 25.2 | 24.3 | 22.6 | 20.4 | 19.2 | 18.9 | 19.2 | 20.0 | 21.4 |  |  |  |  |  |  |
| 45                 | 19.7 | 21.1 | 22.5 | 23.2 | 22.3 | 20.6 | 18.1 | 17.2 | 16.6 | 16.8 | 17.6 | 18.8 |  |  |  |  |  |  |
| 50                 | 17.5 | 18.6 | 20.3 | 20.6 | 19.6 | 18.1 | 15.7 | 14.7 | 14.2 | 14.4 | 15.3 | 16.4 |  |  |  |  |  |  |
| 55                 | 15.2 | 16.2 | 17.6 | 17.8 | 16.9 | 15.6 | 13.2 | 12.3 | 11.7 | 11.8 | 12.9 | 14.0 |  |  |  |  |  |  |
| 60                 | 12.9 | 13.7 | 14.3 | 14.7 | 14.1 | 12.6 | 10.6 | 9.90 | 9.28 | 9.25 | 10.2 | 11.6 |  |  |  |  |  |  |
| 65                 | 10.2 | 11.1 | 11.2 | 11.4 | 11.1 | 9.98 | 8.08 | 7.52 | 7.08 | 6.90 | 7.72 | 9.26 |  |  |  |  |  |  |
| 70                 | 7.66 | 8.24 | 8.02 | 8.03 | 8.18 | 7.22 | 6.00 | 5.44 | 5.07 | 4.70 | 5.52 | 6.89 |  |  |  |  |  |  |
| 75                 | 5.32 | 5.65 | 5.29 | 4.75 | 5.49 | 4.83 | 4.26 | 3.65 | 3.32 | 2.98 | 3.63 | 4.62 |  |  |  |  |  |  |
| 80                 | 3.06 | 3.20 | 2.91 | 2.13 | 3.12 | 2.84 | 2.54 | 2.16 | 1.90 | 1.62 | 2.05 | 2.63 |  |  |  |  |  |  |
| 85                 | 1.28 | 1.25 | 1.08 | 0.88 | 1.29 | 1.23 | 1.01 | 0.91 | 0.79 | 0.74 | 0.82 | 1.08 |  |  |  |  |  |  |
| 90                 | 0.35 | 0.26 | 0.26 | 0.26 | 0.26 | 0.24 | 0.11 | 0.17 | 0.14 | 0.18 | 0.15 | 0.22 |  |  |  |  |  |  |
| 95                 | 0.25 | 0.24 | 0.24 | 0.30 | 0.24 | 0.25 | 0.11 | 0.12 | 0.16 | 0.16 | 0.17 | 0.13 |  |  |  |  |  |  |
| 100                | 0.24 | 0.26 | 0.24 | 0.31 | 0.24 | 0.27 | 0.14 | 0.11 | 0.19 | 0.17 | 0.19 | 0.12 |  |  |  |  |  |  |
| 105                | 0.24 | 0.28 | 0.24 | 0.33 | 0.25 | 0.30 | 0.17 | 0.14 | 0.23 | 0.17 | 0.22 | 0.12 |  |  |  |  |  |  |
| 110                | 0.26 | 0.30 | 0.27 | 0.33 | 0.28 | 0.32 | 0.20 | 0.18 | 0.25 | 0.19 | 0.25 | 0.17 |  |  |  |  |  |  |
| 115                | 0.28 | 0.33 | 0.28 | 0.35 | 0.28 | 0.35 | 0.22 | 0.18 | 0.27 | 0.21 | 0.27 | 0.19 |  |  |  |  |  |  |
| 120                | 0.28 | 0.35 | 0.28 | 0.35 | 0.30 | 0.37 | 0.25 | 0.21 | 0.30 | 0.26 | 0.29 | 0.19 |  |  |  |  |  |  |
| 125                | 0.30 | 0.37 | 0.30 | 0.38 | 0.33 | 0.37 | 0.29 | 0.25 | 0.33 | 0.28 | 0.31 | 0.21 |  |  |  |  |  |  |
| 130                | 0.32 | 0.38 | 0.32 | 0.40 | 0.34 | 0.41 | 0.32 | 0.28 | 0.36 | 0.28 | 0.31 | 0.26 |  |  |  |  |  |  |
| 135                | 0.37 | 0.41 | 0.34 | 0.42 | 0.36 | 0.42 | 0.35 | 0.30 | 0.39 | 0.30 | 0.31 | 0.28 |  |  |  |  |  |  |
| 140                | 0.40 | 0.43 | 0.39 | 0.44 | 0.39 | 0.45 | 0.37 | 0.33 | 0.41 | 0.35 | 0.39 | 0.29 |  |  |  |  |  |  |
| 145                | 0.41 | 0.45 | 0.41 | 0.45 | 0.40 | 0.46 | 0.40 | 0.38 | 0.44 | 0.39 | 0.42 | 0.33 |  |  |  |  |  |  |
| 150                | 0.41 | 0.46 | 0.41 | 0.47 | 0.42 | 0.48 | 0.43 | 0.39 | 0.46 | 0.39 | 0.46 | 0.39 |  |  |  |  |  |  |
| 155                | 0.42 | 0.48 | 0.42 | 0.49 | 0.43 | 0.50 | 0.46 | 0.44 | 0.48 | 0.43 | 0.48 | 0.41 |  |  |  |  |  |  |
| 160                | 0.44 | 0.51 | 0.42 | 0.51 | 0.44 | 0.52 | 0.48 | 0.44 | 0.51 | 0.44 | 0.50 | 0.41 |  |  |  |  |  |  |
| 165                | 0.51 | 0.53 | 0.46 | 0.53 | 0.47 | 0.53 | 0.50 | 0.48 | 0.53 | 0.49 | 0.53 | 0.45 |  |  |  |  |  |  |
| 170                | 0.52 | 0.53 | 0.50 | 0.52 | 0.51 | 0.51 | 0.52 | 0.51 | 0.53 | 0.51 | 0.53 | 0.48 |  |  |  |  |  |  |
| 175                | 0.52 | 0.53 | 0.51 | 0.52 | 0.51 | 0.51 | 0.52 | 0.52 | 0.53 | 0.51 | 0.52 | 0.51 |  |  |  |  |  |  |
| 180                | 0.52 | 0.52 | 0.51 | 0.52 | 0.51 | 0.51 | 0.52 | 0.52 | 0.53 | 0.51 | 0.52 | 0.52 |  |  |  |  |  |  |

C Range: 0 - 360DEG  
C Interval: 30.0DEG  
Test Speed: HIGH  
Temperature:25.3DEG  
Operators:WFW  
Test Date:2022-12-14

γ Range: 0 - 180DEG  
γ Interval: 1.0DEG  
Test System:EVERFINE GO-2000B\_V1 SYSTEM V2.0.269  
Humidity:65.0%  
Test Distance:10.800m [K=1.0000]  
Remarks:

## Photometric Data Table [cd]

| G/C   | 0.0    | 30.0   | 60.0   | 90.0   | 120.0  | 150.0  | 180.0  | 210.0  | 240.0  | 270.0  |
|-------|--------|--------|--------|--------|--------|--------|--------|--------|--------|--------|
| 0.0   | 29.38  | 29.86  | 30.13  | 30.41  | 30.46  | 30.54  | 29.38  | 29.86  | 30.13  | 30.41  |
| 3.0   | 29.35  | 29.95  | 30.31  | 30.62  | 30.46  | 30.44  | 29.10  | 29.44  | 29.68  | 30.09  |
| 6.0   | 29.01  | 29.70  | 30.46  | 30.69  | 30.50  | 30.38  | 28.87  | 29.06  | 29.18  | 29.66  |
| 9.0   | 28.72  | 29.52  | 30.38  | 30.70  | 30.51  | 30.30  | 28.60  | 28.80  | 28.73  | 29.17  |
| 12.0  | 28.70  | 29.47  | 30.10  | 30.69  | 30.48  | 30.09  | 28.20  | 28.22  | 28.18  | 28.53  |
| 15.0  | 28.27  | 29.21  | 29.91  | 30.57  | 30.37  | 29.63  | 27.79  | 27.69  | 27.60  | 27.95  |
| 18.0  | 28.00  | 29.07  | 29.64  | 30.31  | 30.05  | 29.22  | 27.17  | 27.01  | 26.82  | 27.12  |
| 21.0  | 27.53  | 28.60  | 29.39  | 29.98  | 29.62  | 28.75  | 26.37  | 26.01  | 26.08  | 26.31  |
| 24.0  | 26.88  | 28.20  | 28.91  | 29.63  | 28.96  | 27.85  | 25.72  | 25.09  | 25.09  | 25.43  |
| 27.0  | 26.22  | 27.53  | 28.35  | 29.08  | 28.57  | 27.33  | 24.77  | 24.39  | 24.08  | 24.40  |
| 30.0  | 25.52  | 26.72  | 27.81  | 28.31  | 27.74  | 26.44  | 23.73  | 23.19  | 23.18  | 23.43  |
| 33.0  | 24.47  | 25.91  | 26.90  | 27.55  | 26.84  | 25.38  | 22.84  | 22.00  | 21.94  | 22.18  |
| 36.0  | 23.55  | 25.04  | 26.17  | 26.62  | 25.77  | 24.23  | 21.77  | 20.88  | 20.58  | 20.95  |
| 39.0  | 22.23  | 23.90  | 24.97  | 25.59  | 24.78  | 23.07  | 20.69  | 19.64  | 19.31  | 19.63  |
| 42.0  | 20.93  | 22.53  | 23.91  | 24.47  | 23.64  | 21.86  | 19.43  | 18.37  | 18.02  | 18.26  |
| 45.0  | 19.66  | 21.07  | 22.49  | 23.23  | 22.27  | 20.60  | 18.14  | 17.21  | 16.64  | 16.85  |
| 48.0  | 18.28  | 19.57  | 21.20  | 21.74  | 20.71  | 19.15  | 16.82  | 15.65  | 15.15  | 15.34  |
| 51.0  | 17.07  | 18.14  | 19.77  | 20.08  | 19.17  | 17.65  | 15.20  | 14.22  | 13.65  | 13.82  |
| 54.0  | 15.69  | 16.63  | 18.13  | 18.48  | 17.54  | 16.08  | 13.72  | 12.84  | 12.17  | 12.34  |
| 57.0  | 14.34  | 15.25  | 16.28  | 16.64  | 15.72  | 14.52  | 12.07  | 11.20  | 10.75  | 10.77  |
| 60.0  | 12.87  | 13.73  | 14.32  | 14.66  | 14.10  | 12.63  | 10.57  | 9.901  | 9.275  | 9.250  |
| 63.0  | 11.25  | 12.12  | 12.49  | 12.72  | 12.25  | 11.11  | 9.094  | 8.392  | 7.945  | 7.796  |
| 66.0  | 9.784  | 10.51  | 10.46  | 10.69  | 10.50  | 9.345  | 7.655  | 7.082  | 6.644  | 6.376  |
| 69.0  | 8.192  | 8.798  | 8.615  | 8.673  | 8.823  | 7.697  | 6.402  | 5.855  | 5.460  | 5.059  |
| 72.0  | 6.724  | 7.219  | 6.946  | 6.671  | 7.050  | 6.173  | 5.301  | 4.713  | 4.325  | 3.944  |
| 75.0  | 5.318  | 5.655  | 5.291  | 4.753  | 5.491  | 4.831  | 4.256  | 3.653  | 3.321  | 2.981  |
| 78.0  | 3.925  | 4.138  | 3.815  | 2.954  | 4.009  | 3.598  | 3.230  | 2.697  | 2.421  | 2.122  |
| 81.0  | 2.657  | 2.739  | 2.484  | 1.840  | 2.699  | 2.483  | 2.227  | 1.900  | 1.652  | 1.421  |
| 84.0  | 1.590  | 1.590  | 1.382  | 1.099  | 1.604  | 1.521  | 1.299  | 1.124  | 0.9880 | 0.8672 |
| 87.0  | 0.7647 | 0.6910 | 0.5844 | 0.5253 | 0.7579 | 0.6910 | 0.5106 | 0.5075 | 0.4555 | 0.4583 |
| 90.0  | 0.3473 | 0.2561 | 0.2637 | 0.2632 | 0.2574 | 0.2354 | 0.1107 | 0.1667 | 0.1385 | 0.1805 |
| 93.0  | 0.2563 | 0.2424 | 0.2424 | 0.2909 | 0.2425 | 0.2355 | 0.1108 | 0.1247 | 0.1524 | 0.1593 |
| 96.0  | 0.2425 | 0.2424 | 0.2424 | 0.3117 | 0.2424 | 0.2494 | 0.1178 | 0.1109 | 0.1732 | 0.1593 |
| 99.0  | 0.2424 | 0.2494 | 0.2424 | 0.3117 | 0.2424 | 0.2701 | 0.1454 | 0.1108 | 0.1939 | 0.1662 |
| 102.0 | 0.2424 | 0.2702 | 0.2424 | 0.3117 | 0.2424 | 0.2909 | 0.1524 | 0.1246 | 0.2079 | 0.1662 |
| 105.0 | 0.2424 | 0.2770 | 0.2424 | 0.3255 | 0.2493 | 0.2978 | 0.1663 | 0.1386 | 0.2286 | 0.1731 |
| 108.0 | 0.2424 | 0.2909 | 0.2699 | 0.3256 | 0.2563 | 0.3186 | 0.1870 | 0.1729 | 0.2493 | 0.1939 |
| 111.0 | 0.2700 | 0.3048 | 0.2701 | 0.3325 | 0.2770 | 0.3187 | 0.2009 | 0.1801 | 0.2632 | 0.1870 |
| 114.0 | 0.2771 | 0.3186 | 0.2840 | 0.3463 | 0.2770 | 0.3395 | 0.2285 | 0.1801 | 0.2701 | 0.2008 |
| 117.0 | 0.2770 | 0.3325 | 0.2840 | 0.3463 | 0.2839 | 0.3463 | 0.2216 | 0.1869 | 0.2909 | 0.2215 |
| 120.0 | 0.2839 | 0.3463 | 0.2840 | 0.3464 | 0.2977 | 0.3671 | 0.2494 | 0.2077 | 0.3047 | 0.2559 |
| 123.0 | 0.2977 | 0.3601 | 0.2977 | 0.3809 | 0.3255 | 0.3740 | 0.2702 | 0.2147 | 0.3254 | 0.2770 |
| 126.0 | 0.3047 | 0.3740 | 0.3115 | 0.3878 | 0.3255 | 0.3741 | 0.2840 | 0.2699 | 0.3324 | 0.2840 |
| 129.0 | 0.3117 | 0.3809 | 0.3117 | 0.4017 | 0.3460 | 0.4018 | 0.3117 | 0.2770 | 0.3533 | 0.2840 |
| 132.0 | 0.3255 | 0.4017 | 0.3323 | 0.4017 | 0.3464 | 0.4155 | 0.3324 | 0.2770 | 0.3604 | 0.2977 |
| 135.0 | 0.3670 | 0.4087 | 0.3394 | 0.4155 | 0.3601 | 0.4225 | 0.3464 | 0.2978 | 0.3878 | 0.3047 |
| 138.0 | 0.4016 | 0.4225 | 0.3601 | 0.4225 | 0.3878 | 0.4365 | 0.3672 | 0.3116 | 0.4019 | 0.3324 |
| 141.0 | 0.4017 | 0.4433 | 0.4152 | 0.4365 | 0.4015 | 0.4571 | 0.3879 | 0.3530 | 0.4225 | 0.3600 |
| 144.0 | 0.4017 | 0.4433 | 0.4086 | 0.4571 | 0.4017 | 0.4572 | 0.4017 | 0.3809 | 0.4363 | 0.3878 |
| 147.0 | 0.4086 | 0.4572 | 0.4086 | 0.4641 | 0.4017 | 0.4711 | 0.4224 | 0.3878 | 0.4571 | 0.3948 |
| 150.0 | 0.4086 | 0.4641 | 0.4086 | 0.4710 | 0.4155 | 0.4779 | 0.4296 | 0.3878 | 0.4641 | 0.3948 |
| 153.0 | 0.4155 | 0.4711 | 0.4225 | 0.4780 | 0.4155 | 0.4918 | 0.4434 | 0.3947 | 0.4780 | 0.4223 |
| 156.0 | 0.4224 | 0.4917 | 0.4225 | 0.4918 | 0.4226 | 0.4987 | 0.4640 | 0.4363 | 0.4917 | 0.4294 |
| 159.0 | 0.4295 | 0.5056 | 0.4225 | 0.5056 | 0.4363 | 0.5126 | 0.4780 | 0.4433 | 0.4920 | 0.4294 |
| 162.0 | 0.4363 | 0.5125 | 0.4363 | 0.5125 | 0.4432 | 0.5195 | 0.4917 | 0.4640 | 0.5195 | 0.4569 |
| 165.0 | 0.5057 | 0.5264 | 0.4639 | 0.5264 | 0.4708 | 0.5264 | 0.4988 | 0.4779 | 0.5265 | 0.4917 |
| 168.0 | 0.5125 | 0.5264 | 0.4985 | 0.5194 | 0.5056 | 0.5263 | 0.5194 | 0.4918 | 0.5333 | 0.5125 |
| 171.0 | 0.5194 | 0.5264 | 0.4987 | 0.5194 | 0.5124 | 0.5125 | 0.5194 | 0.5125 | 0.5333 | 0.5125 |
| 174.0 | 0.5194 | 0.5264 | 0.5124 | 0.5194 | 0.5125 | 0.5125 | 0.5194 | 0.5194 | 0.5333 | 0.5125 |
| 177.0 | 0.5194 | 0.5264 | 0.5125 | 0.5194 | 0.5125 | 0.5125 | 0.5194 | 0.5194 | 0.5333 | 0.5125 |
| 180.0 | 0.5194 | 0.5194 | 0.5125 | 0.5194 | 0.5125 | 0.5125 | 0.5194 | 0.5194 | 0.5333 | 0.5125 |
| G/C   | 300.0  | 330.0  |        |        |        |        |        |        |        |        |
| 0.0   | 30.46  | 30.54  |        |        |        |        |        |        |        |        |
| 3.0   | 30.16  | 30.38  |        |        |        |        |        |        |        |        |
| 6.0   | 29.77  | 29.98  |        |        |        |        |        |        |        |        |
| 9.0   | 29.27  | 29.44  |        |        |        |        |        |        |        |        |
| 12.0  | 28.64  | 29.14  |        |        |        |        |        |        |        |        |
| 15.0  | 28.01  | 28.75  |        |        |        |        |        |        |        |        |
| 18.0  | 27.16  | 28.24  |        |        |        |        |        |        |        |        |
| 21.0  | 26.63  | 27.66  |        |        |        |        |        |        |        |        |
| 24.0  | 25.80  | 27.00  |        |        |        |        |        |        |        |        |
| 27.0  | 24.86  | 26.09  |        |        |        |        |        |        |        |        |
| 30.0  | 23.75  | 25.18  |        |        |        |        |        |        |        |        |

C Range: 0 - 360DEG  
 C Interval: 30.0DEG  
 Test Speed: HIGH  
 Temperature: 25.3DEG  
 Operators: WFW  
 Test Date: 2022-12-14

γ Range: 0 - 180DEG  
 γ Interval: 1.0DEG  
 Test System: EVERFINE GO-2000B\_V1 SYSTEM V2.0.269  
 Humidity: 65.0%  
 Test Distance: 10.800m [K=1.0000]  
 Remarks:

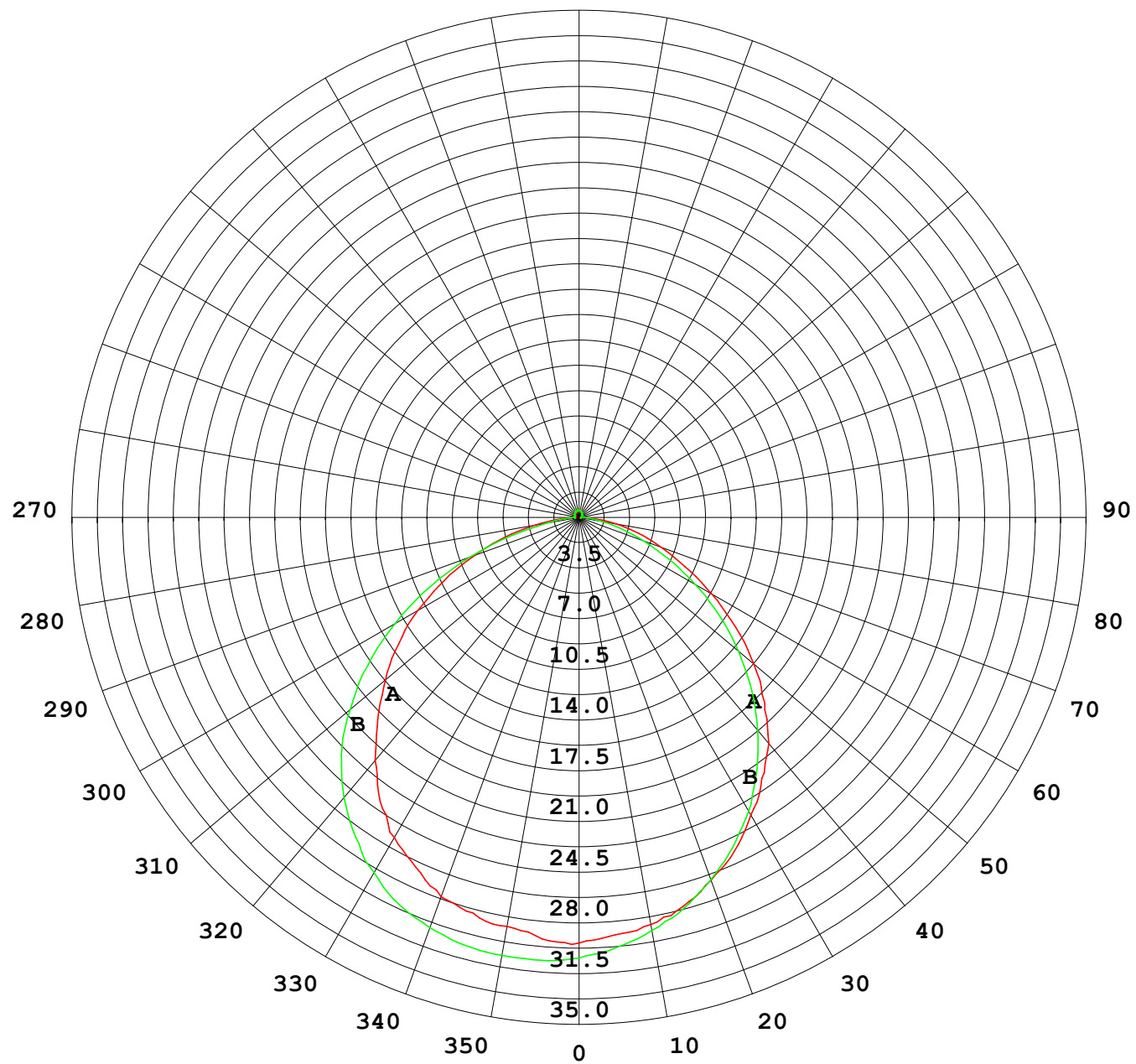
## Photometric Data Table [cd]

|       |        |        |
|-------|--------|--------|
| 33.0  | 22.77  | 24.12  |
| 36.0  | 21.62  | 23.09  |
| 39.0  | 20.42  | 21.91  |
| 42.0  | 19.08  | 20.42  |
| 45.0  | 17.57  | 18.84  |
| 48.0  | 16.22  | 17.38  |
| 51.0  | 14.77  | 15.91  |
| 54.0  | 13.34  | 14.50  |
| 57.0  | 11.75  | 13.05  |
| 60.0  | 10.21  | 11.62  |
| 63.0  | 8.693  | 10.20  |
| 66.0  | 7.240  | 8.807  |
| 69.0  | 5.924  | 7.303  |
| 72.0  | 4.712  | 5.975  |
| 75.0  | 3.626  | 4.617  |
| 78.0  | 2.629  | 3.390  |
| 81.0  | 1.770  | 2.309  |
| 84.0  | 1.016  | 1.333  |
| 87.0  | 0.4553 | 0.5838 |
| 90.0  | 0.1524 | 0.2154 |
| 93.0  | 0.1524 | 0.1386 |
| 96.0  | 0.1663 | 0.1316 |
| 99.0  | 0.1801 | 0.1247 |
| 102.0 | 0.2079 | 0.1247 |
| 105.0 | 0.2217 | 0.1247 |
| 108.0 | 0.2356 | 0.1315 |
| 111.0 | 0.2563 | 0.1869 |
| 114.0 | 0.2633 | 0.1870 |
| 117.0 | 0.2770 | 0.1870 |
| 120.0 | 0.2910 | 0.1870 |
| 123.0 | 0.3047 | 0.2008 |
| 126.0 | 0.3117 | 0.2147 |
| 129.0 | 0.3117 | 0.2491 |
| 132.0 | 0.3117 | 0.2838 |
| 135.0 | 0.3117 | 0.2770 |
| 138.0 | 0.3810 | 0.2839 |
| 141.0 | 0.4019 | 0.2977 |
| 144.0 | 0.4225 | 0.3254 |
| 147.0 | 0.4365 | 0.3393 |
| 150.0 | 0.4571 | 0.3947 |
| 153.0 | 0.4641 | 0.4086 |
| 156.0 | 0.4780 | 0.4086 |
| 159.0 | 0.4918 | 0.4086 |
| 162.0 | 0.5056 | 0.4155 |
| 165.0 | 0.5263 | 0.4502 |
| 168.0 | 0.5264 | 0.4846 |
| 171.0 | 0.5264 | 0.4917 |
| 174.0 | 0.5194 | 0.5056 |
| 177.0 | 0.5194 | 0.5125 |
| 180.0 | 0.5194 | 0.5194 |

C Range: 0 - 360DEG  
 C Interval: 30.0DEG  
 Test Speed: HIGH  
 Temperature: 25.3DEG  
 Operators: WFW  
 Test Date: 2022-12-14

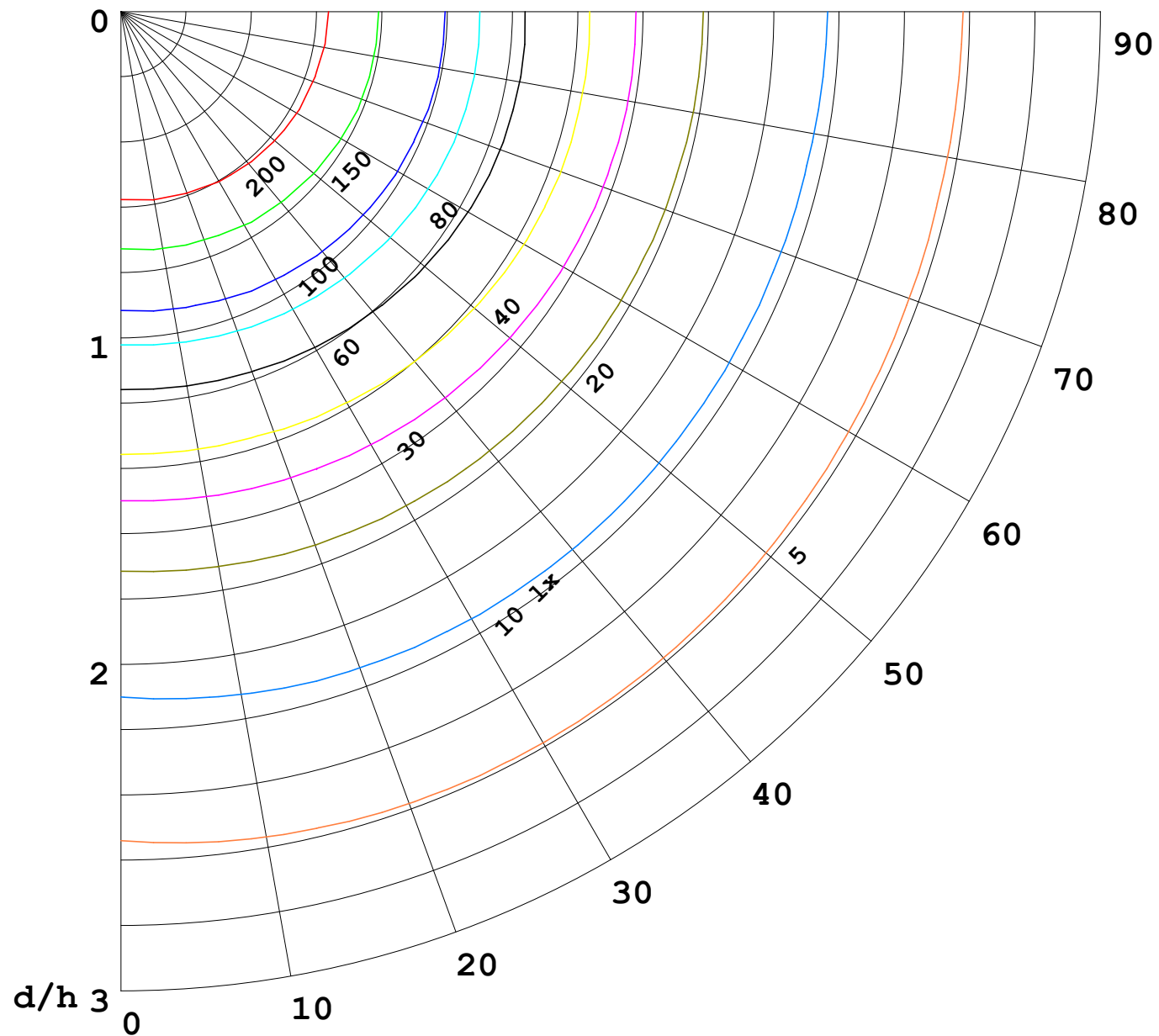
γ Range: 0 - 180DEG  
 γ Interval: 1.0DEG  
 Test System: EVERFINE GO-2000B\_V1 SYSTEM V2.0.269  
 Humidity: 65.0%  
 Test Distance: 10.800m [K=1.0000]  
 Remarks:

I (cd)



1000 lm

$\kappa = 1$



F = 5000 lm  
 K = 0.7  
 Hcc = 0.0 m  
 Hfc = 0.0 m  
 Eave = 100 lx

|   | Pcc | Pw | Pfc |
|---|-----|----|-----|
| — | 70  | 50 | 30  |
| — | 50  | 30 | 20  |

